

AQUA

MORAIRA - ALICANTE



NEW APARTMENTS WALKING DISTANCE TO MORAIRA BEACH

AQUA

MORAIRA

The newly built residential area is located just metres from Moraira's Ampolla beach and five minutes walk from the town center. The project is surrounded by a natural area with direct pedestrian access from the development, that lead us straight to the beach and the sea.

For all of this, **Aqua** is a paradise to live.



MORAIRA: TOURIST BEACH DESTINATION WITH ALL AMENITIES

Moraira is an important and popular international tourist destination on the northern coast of Alicante province (Spain).

Situated between Calpe and Javea, is famous for the beautiful beaches and crystalline waters where you can swim or enjoy water sports and activities such as sailing or diving all year round.

Aqua is placed in a peaceful residential area with every type of service within 5-10 minutes: supermarkets and market, banks, restaurants and cafés, medical centre, school, port, golf course, bus station and tourist information office.



Alicante Airport
95 km away

PROPERTIES TO LIVE ALL YEAR

Aqua is a development comprising 94 apartments **with 2 or 3 bedrooms with sea views** from a few penthouses. Every home has been built and finished with top quality materials.

Communal areas which include pools (for adults and for children) and gardens create beautiful surroundings where you can relax and enjoy all the comforts available.



LARGE TERRACES WITH VIEWS

The spacious terraces blend into the living room thanks to the large windows. Private gardens on the ground floor, and terraces on top floors with access from inside the home.

Aqua is a private gated community, 300 metres from La Ampolla beach, in Moraira.

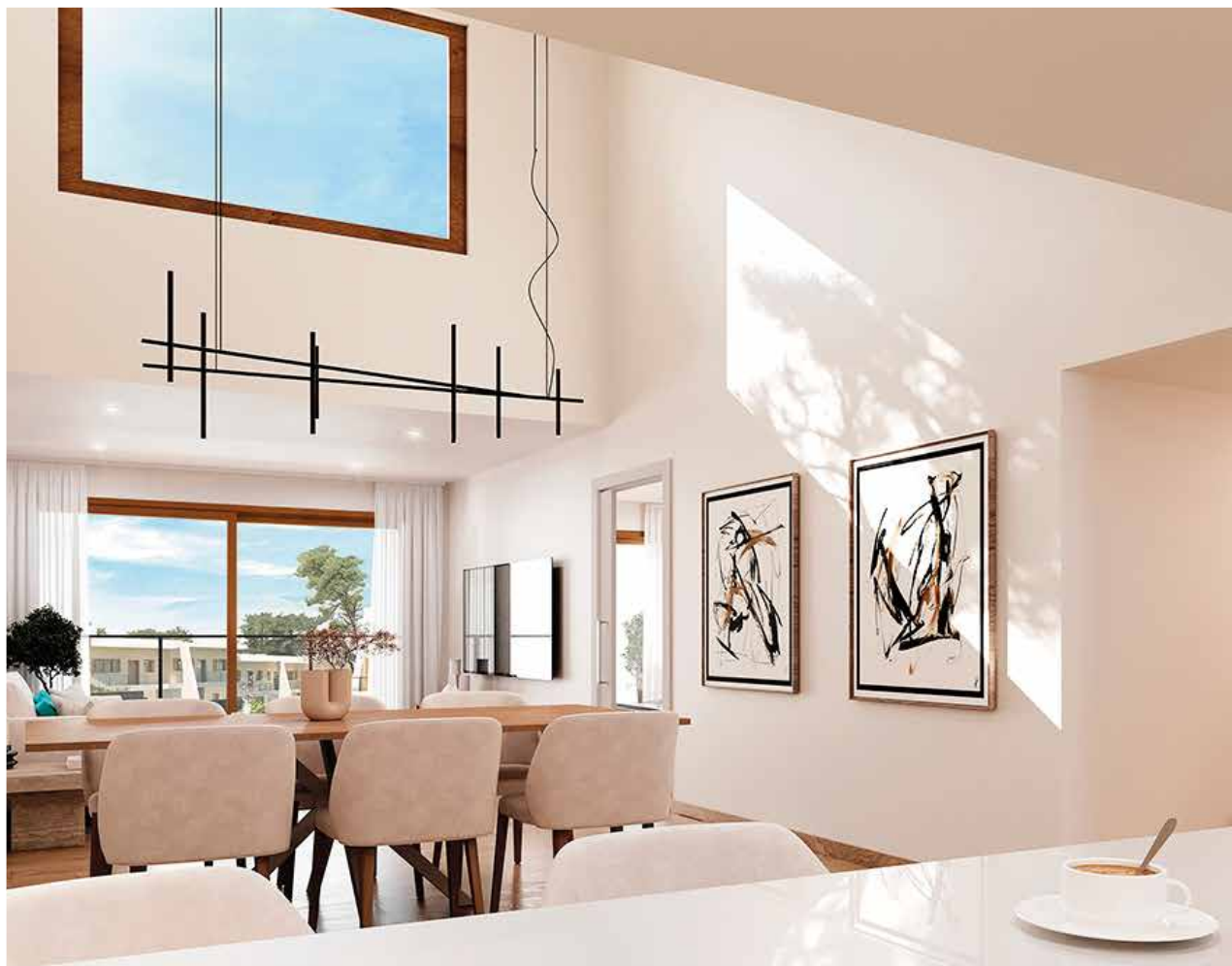


A HOME LIKE NOWHERE ELSE

Materials and finishes have been selected to provide the homes with a high degree of elegance, comfort and exclusivity.

The homes at **Aqua** have 2 bathrooms, an open-plan kitchen, and a living/dining room. An underground parking space is included for each apartment and storeroom.

The homes at **Aqua** include air conditioning and heating and a fitted kitchen with oven and microwave, vitro-ceramic hob, and extractor fan.



DESIGN AND COMFORT

2 BEDROOM GROUND FLOOR



2 BEDROOM GROUND FLOOR				
Build area	From	85,95 m ²	to	89,05 m ²
Terrace	From	17,50 m ²	to	18,00 m ²
Garden	From	26,45 m ²	to	50,23 m ²

Images and project drawings are for illustrative purposes only.
Its content does not constitute a contract, part of a contract, or a guarantee.



Underground parking and storeroom.

3 BEDROOM GROUND FLOOR - TYPE A



3 BEDROOM GROUND FLOOR - TYPE A

Build area	From	106,60 m ²	to	108,95 m ²
Terrace	From	18,10 m ²	to	18,50 m ²
Garden	From	28,10 m ²	to	147,60 m ²

Images and project drawings are for illustrative purposes only.
Its content does not constitute a contract, part of a contract, or a guarantee.



Underground parking and storeroom.

3 BEDROOM GROUND FLOOR - TYPE B



3 BEDROOM GROUND FLOOR - TYPE B

Build area	From	106,60 m ²	to	108,95 m ²
Terrace	From	18,10 m ²	to	18,50 m ²
Garden	From	28,10 m ²	to	147,60 m ²

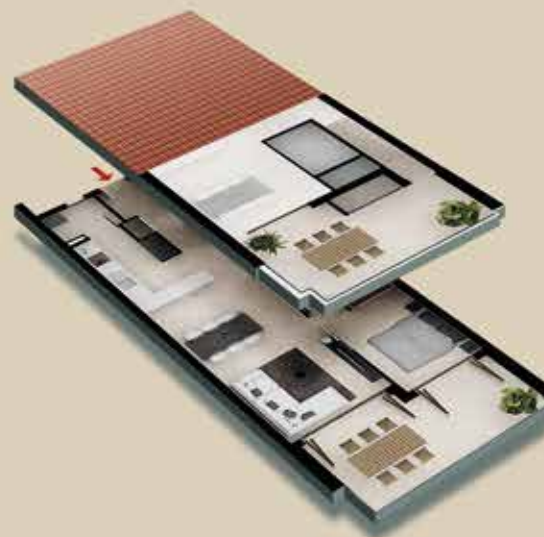
Images and project drawings are for illustrative purposes only.
Its content does not constitute a contract, part of a contract, or a guarantee.



Underground parking and storeroom.



3 BEDROOM PENTHOUSES



3 BEDROOM PENTHOUSES

Bild area	From	103,50 m ²	to	114,36 m ²
Terrace	From	16,14 m ²	to	18,00 m ²
Solarium	From	15,50 m ²	to	24,06 m ²

Images and project drawings are for illustrative purposes only.
Its content does not constitute a contract, part of a contract, or a guarantee.



Underground parking and storeroom.

ENERGY EFFICIENCY AND THE ENVIRONMENT

At Taylor Wimpey Spain we are committed to adapting all our processes and supply chain to fight climate change, be more sustainable and contribute to improve health and well-being in your new home.

To do this, we adapt our construction processes and work to make our homes as efficient and healthy as possible.

What measures does TWE adopt in the execution of its works:

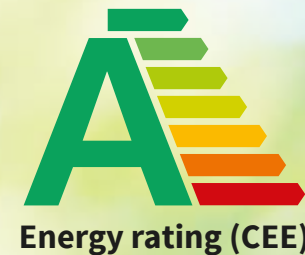
- Nearby suppliers that help minimize the carbon footprint derived from transportation.
- We segregate and recycle the waste produced on site.
- Exterior and environmental conditioning once our work is completed.
- We contract electrical energy with a Certified Guarantee of Origin for the execution of our work.

What do we do to make your home more sustainable and efficient:

- Domestic Hot Water using atherothermal machines.
- In those homes where possible, we install photovoltaic panels for the production of electricity, connected directly to the electrical distribution panel.
- Faucets with aerators to save water and dual flush cisterns.
- Installation of efficient appliances.
- Air conditioning equipment with R32 refrigerant gas (low Global Warming Potential and high energy efficiency).
- In selected homes, installation of pergolas for solar protection.
- Controlled mechanical ventilation for interior air renewal in all homes.
- Execution control and verification of thermal bridges.

What do we do to improve our common areas:

- Private parking space with pre-installation for charging an electric vehicle.
- Installation of drip irrigation systems with timers in garden areas.
- Presence detectors and/or timers in common areas. We install low consumption lighting.
- Native vegetation will be maintained in areas where possible and new plantations will be made with vegetation that needs little irrigation.
- In certain urbanizations, salt chlorination pools with sizes and depths adjusted to save water.



WHY IS TAYLOR WIMPEY ESPAÑA THE RIGHT DECISION?

Buying a Taylor Wimpey property in Spain doesn't just mean that you will now have a residence in a beautiful location, it also means that you are purchasing with total peace of mind. **Taylor Wimpey España** is a subsidiary of Taylor Wimpey PLC, a leading developer of residential real estate in Europe since 1880.

The subsidiary in Spain has been building properties in exclusive residential areas in the Balearic Islands, on the Costa Blanca and on the Costa del Sol since 1958. Sustainability and protecting the environment is important to us, as is creating architecture that blends harmoniously into the surrounding area.

In Spain we can look back with pride on over 65 years of experience building exclusive residential complexes. More than 7,000 customers have already placed their trust in us and have been very satisfied with the quality of our new build properties and our extensive After-Sales service which is a vital part of the customer service that sets us apart. We want you to relax and enjoy your new home knowing that every detail meets the highest quality standards, even those you cannot see.

TAYLOR WIMPEY IS THERE FOR YOU

If you are looking for your new home, or a holiday home, we will be delighted to help you find your perfect place in the sun.

**Taylor
Wimpey**
España



Freephone UK:

08000 121 020

Rest of the world:

+34 971 70 69 72

www.taylorwimpeyspain.com

OTHER DEVELOPMENTS IN COSTA BLANCA

