

BUILDING SPECIFICATIONS





KITCHENS

The kitchens at **Alzamara Views** are perfectly integrated into the design of the homes. Equipped with units with a melamine *Swiss truffle oak* finish, with a modern style **Silestone** worktop in Marengo grey, and skirting in black.

Every kitchen includes a package of **Balay** appliances with a refrigerator, column-mounted electric oven and microwave, vitro-ceramic hob, extractor fan, dishwasher, washing machine, and single sink with a black mixer tap.

BATHROOMS

The main bathroom has a double washbasin mounted in a white unit with an oak-coloured front by **Jacob Delafon**.

For the second bathroom, we have chosen the same model, with a single washbasin. Both bathrooms have black mixer taps by **TRES**, and a modern style WC, also by **Jacob Delafon**.

All the bathrooms include a shower with a white, textured, imitation slate shower tray with fixed glass shower screens and mirrors installed above the washbasins.

Both bathrooms are tiled in porcelain tiles by **Saloni**, combining different finishes in a sand colour.



INTERIOR CARPENTRY

The armoured main entrance door is finished in the same colour as the other doors in the apartment.

For greater integration into the overall design, all the interior doors are plain, finished in oak-coloured melamine, with hardware in black.

All the homes have fitted wardrobes with plain sliding doors, in the same melamine finish as the interior doors, and interior panelling with a luggage shelf, drawers, and hanging rail.





EXTERIOR CARPENTRY

In the living rooms, we have chosen large format aluminium sliding doors, in brown, with thermal break and double-glazed safety glass that open the living room up completely to the impressive panoramic views.

The other rooms have casement windows in brown, double-glazed with thermal break, and for greater comfort, the bedroom windows also have motorised rolling aluminium shutters in brown.



FLOORING

For all rooms in the apartments, we have chosen the same large format (90x90cm) porcelain tile by **Saloni** in a sand colour, with skirting of the same model and colour, which continues onto the terraces and solariums in its non-slip version, achieving a sense of continuity throughout the home.



INSTALLATIONS

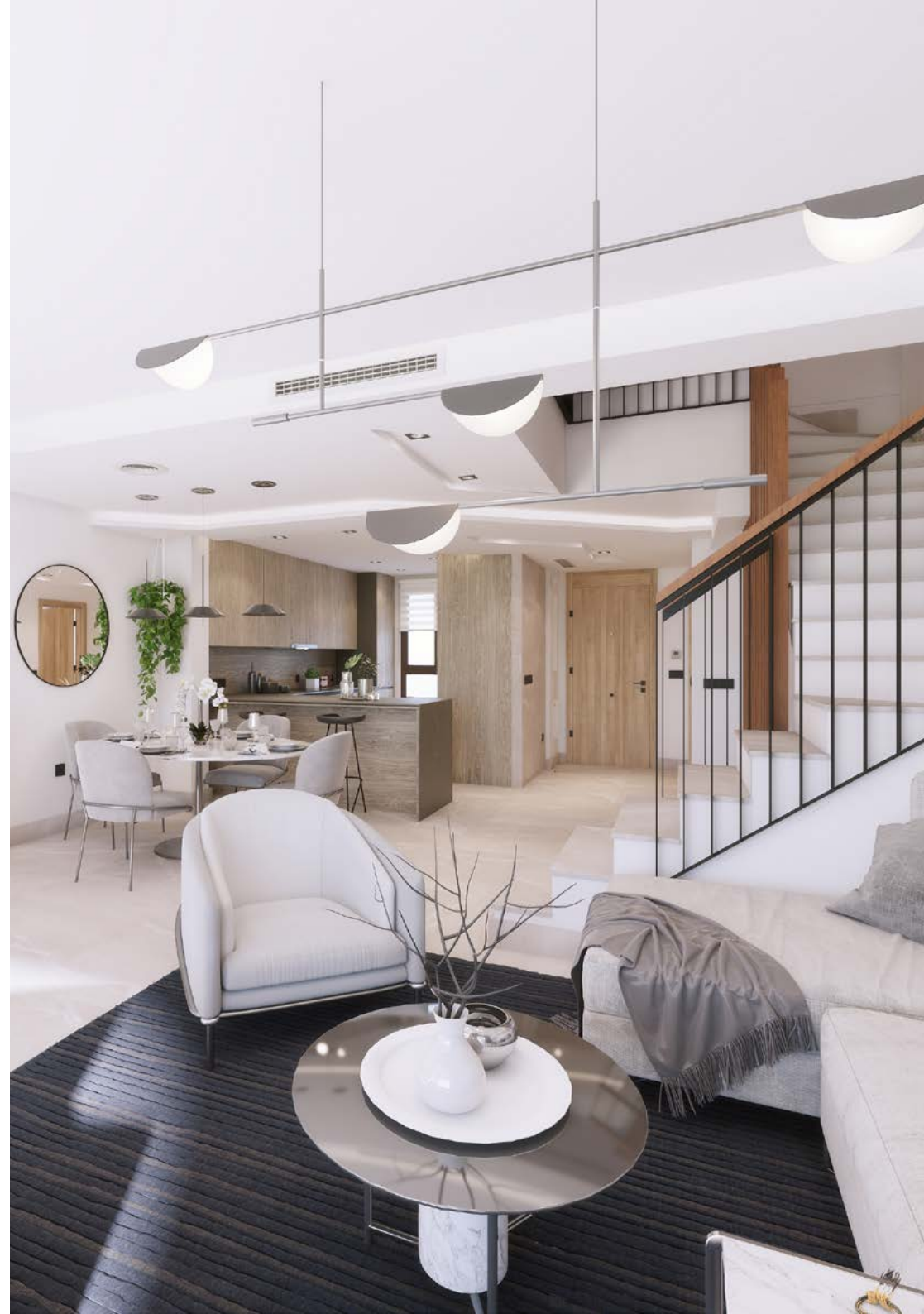
All the apartments at **Almazara Views** have a hot and cold air conditioning system, installed via ducts located in the false ceiling, and mechanical ventilation according to current legislation, to optimise the interior air quality.

An LED lighting package is installed according to the project plans for each home.

Power sockets and switches by **Schneider** in anthracite grey, and there are USB charging points in the kitchen and master bedroom. Fibre optic, telephone points, and TV points in the living/dining room and in the bedrooms with digital terrestrial antenna and satellite dish connections.

The homes have an individual **air source heat pump** to produce domestic hot water, as well as there being a communal **solar panel** installation to provide **renewable electrical energy** to supply power for part of the buildings' energy consumption.

The buildings have a high level of insulation to walls, roofs, and windows and have obtained the **energy efficiency classification "B"**.



EXTERIORS

The exterior communal areas have a pool with lighting and shower, and landscaped areas with a drip irrigation system installed.

Every home will have a private underground garage with a motorised door and power socket provided for the option of an electric vehicle charging point.



TAYLOR WIMPEY DE ESPAÑA, S.A.U. TAYLOR WIMPEY DE ESPAÑA, S.A.U. reserves the right to modify or change the materials and distribution of the abovementioned specifications and plans to improve the project in accordance with the criteria of the project architects.

*The images and project plans are purely for illustrative purposes. Its content does not constitute a contract, part of a contract or guarantee.

