

BUILDING SPECIFICATIONS



KITCHEN

With the aim of endowing the rooms with a sense of spaciousness, the kitchen opens onto the living/ dining room and the terrace. Not only does this create an open and unobstructed space, but it also allows the entire room to be bathed in natural light.

The kitchen features white laminate wall and base units and a stainless steel single-basin sink. The **Silestone** countertop is also in white.

It is also equipped with everything you need: induction hob, oven and stainless steel extractor hood.



BATHROOMS

In order to provide our customers with the utmost comfort, the shower tray is integrated into the floor and protected by a glass screen.

The sink is installed on a wall unit with a double door and countertop. All taps and fittings are chrome-plated, by **Teka** or similar, including a shower bar.

In addition, white **Ideal Standard** Connect or similar floor-mounted toilets have been installed in the master bathroom. The Connect Space model or similar has been chosen for the toilet.

For the tiling and with a view to adding extra style to the space, ceramic tiles have been installed from the floor to the ceiling.





INTERIOR CARPENTRY

To increase the sensation of brightness, the interior doors have been finished in white.

Seeking aesthetic continuity, the fitted wardrobes have the same finish as the interior doors. They contain a luggage rack and clothes rail, and the interiors are finished in melamine.

All the hanging hardware is made of stainless steel or matt silver aluminium. The handles, locks and knobs are made of the same material.





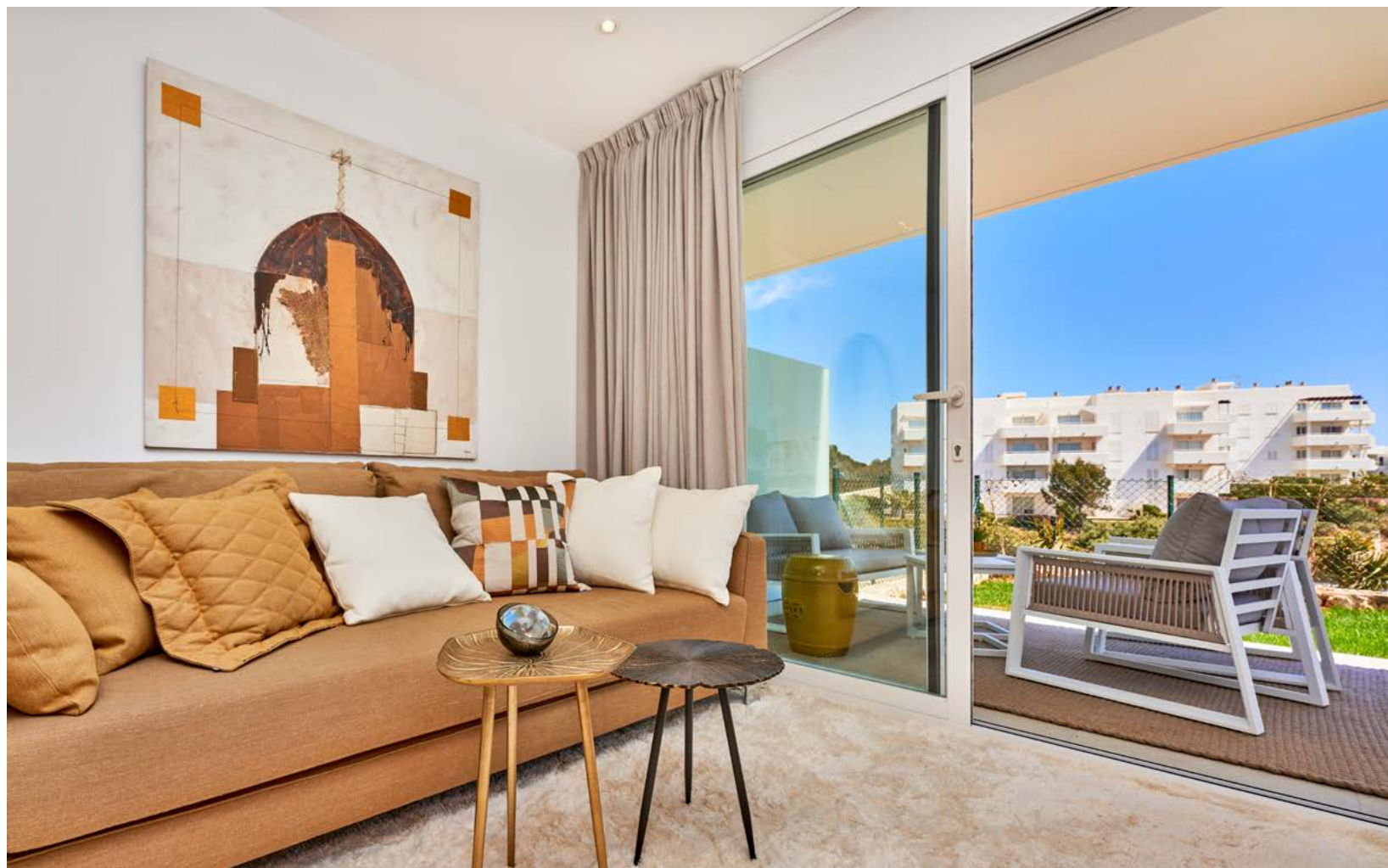
EXTERIOR CARPENTRY

All the windows and terrace doors in the apartments are made of white aluminium.

On the other hand, to guarantee comfort, the windows have a thermal break and insulating double glazing.

The bedrooms feature lacquered aluminium blinds.

In addition, the apartments have security glass in the living room terrace doors.



FLOORING

Large-format porcelain tiles have been chosen for the interior of the house.

For the terraces and porches, a similar model has been selected, but with a non-slip finish.



FIXTURES

These homes are comfortably air-conditioned by means of an air to air heat pump with a wall-mounted split system. In addition, a highly energy efficient compressor with Inverter technology has been installed.

Each property has an aerothermal system with an accumulation capacity of 110L for the production of domestic hot water.

The entire property is illuminated by recessed LED ceiling lights. The laundry room has a wall light.

The living room and bedrooms have telephone and TV-TDT-SAT sockets. The house also has a terrestrial TV antenna and a satellite dish with eight polarities.



TAYLOR WIMPEY DE ESPAÑA, S.AU. reserves the right to modify or change the materials, models and distribution of these specifications and plans in order to improve the project at the discretion of the technicians who are responsible for the project.



EXTERIORS

One of the major attractions of this residential development is its large communal gardens. These include 2 fantastic communal swimming pools, each of which have a shower and lighting.

Finally, each property comes with a ground-level parking space and a basement storage room.

